



ROSSLYN  
— C I T Y —  
C E N T E R

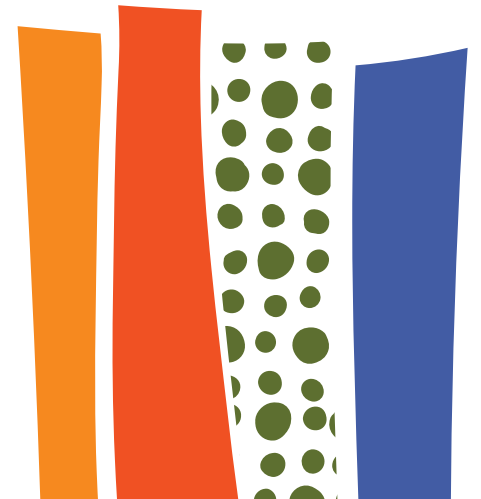
1700 N Moore St





# THE NEW ROSSLYN CITY CENTER

Rosslyn City Center is a place that nourishes your mind, body and soul. Contemporary workplace designs, state-of-the-art fitness at Golds Gym, exciting culinary offerings provided at Assembly, thought-provoking art installations, along with health and wellness at the forefront, provides employees and the community a place to be inspired.







# M I

# N D

## EXPAND YOUR MIND

Available space ranging from small suites to full floors along with dedicated and flexible spec suites makes Rosslyn City Center the perfect choice for many different types of businesses. Conference space is available for the use of all tenants and is the perfect place for one-off meetings or all day team building exercises.



BUILDING

AMENITIES

TRANSIT

NEIGHBORHOOD





# S P A C E S   T H A T   I N S P I R E

The \$35 million renovation transformed the lobby, the office common areas, the conference center and tenant amenities. Thought provoking art installations, textures and modern furniture are integrated throughout the property, creating spaces that inspire the inhabitants.







BUILDING

AMENITIES

TRANSIT

NEIGHBORHOOD



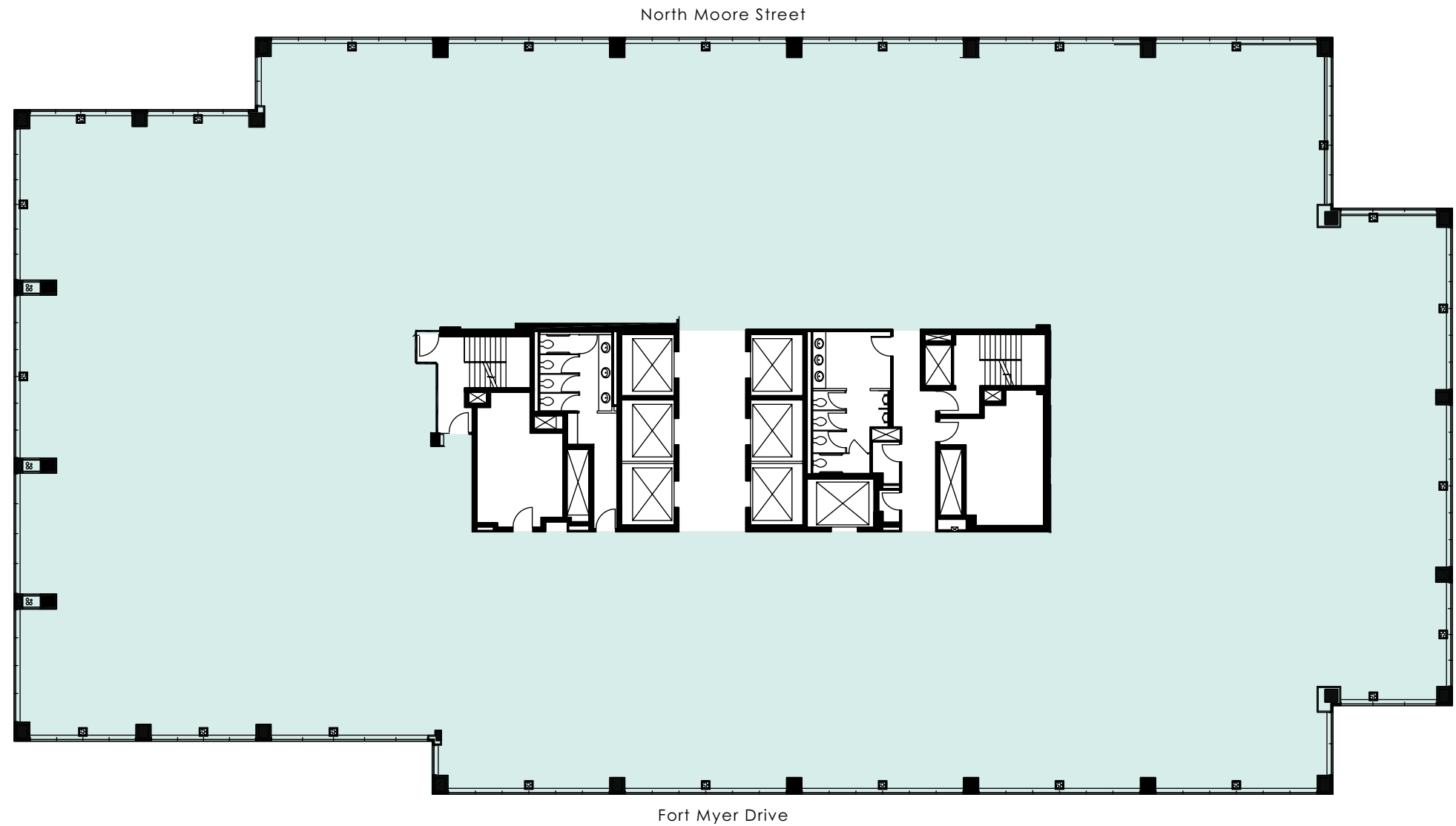
# DESIGN DRIVEN SUITES

The flexible custom designed suites are move-in ready ranging in size from 1,800 SF-7,500 SF.



# TYPICAL FLOOR PLAN

22ND FLOOR  
23,506 RSF



 Space Available



# BO DY



## FUEL YOUR BODY

From Assembly's creative culinary options to a state-of-the-art Gold's Gym to Chase Bank and Panera Bread, Rosslyn City Center is more than above your average tenant amenities.



BUILDING

AMENITIES

TRANSIT

NEIGHBORHOOD





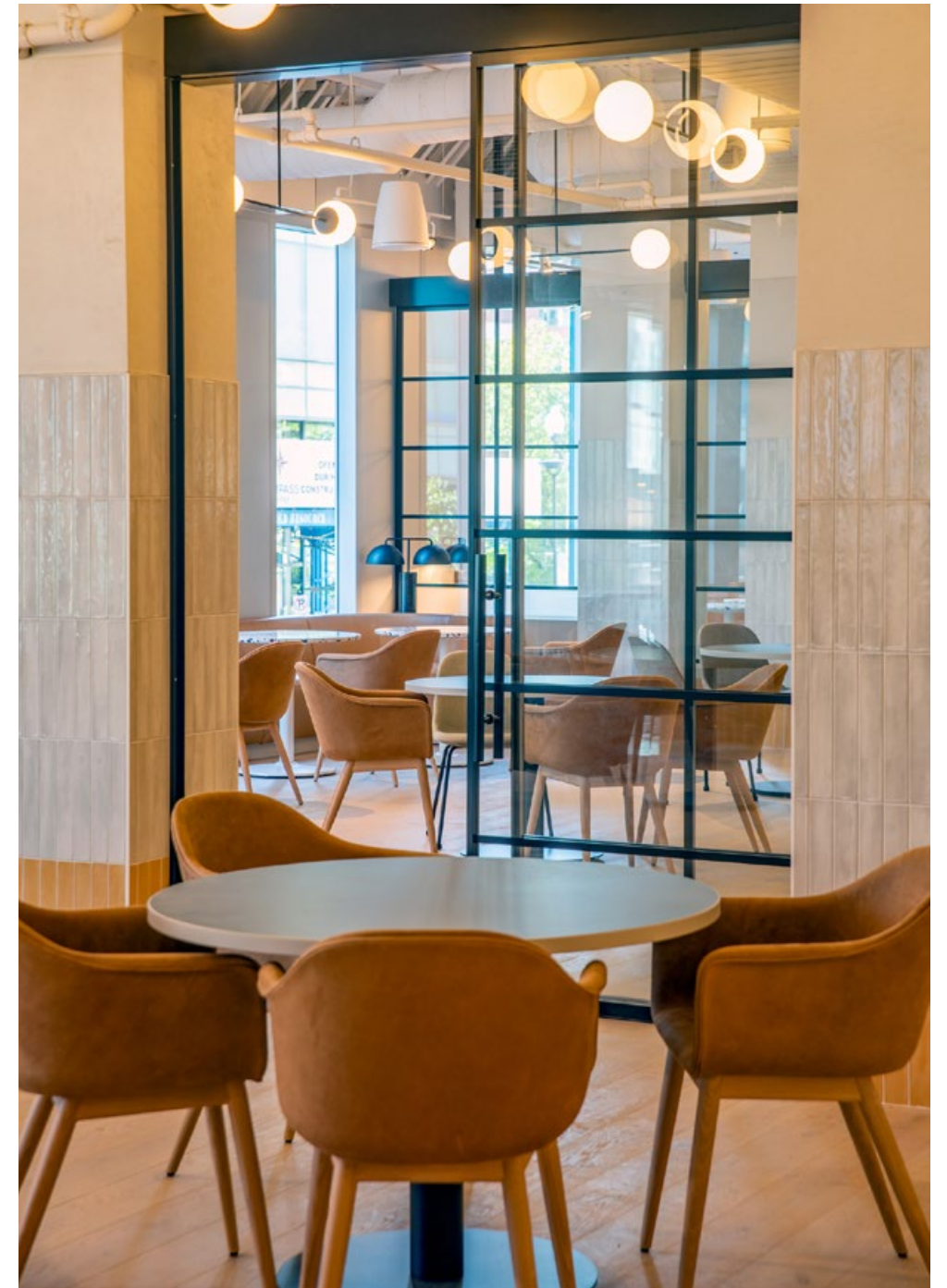
## ELEVATE YOUR DAY

Assembly is the neighborhood's center of gravity for all day dining, working, caffeinating and entertaining – integrating elements from your favorite local coffee shop, hotel lobby, full-service restaurant and coworking space. Beginning with early morning gourmet coffee and ending with late night craft cocktails, Assembly keeps long hours, just like you do.

# ASSEMBLY







BUILDING

AMENITIES

TRANSIT

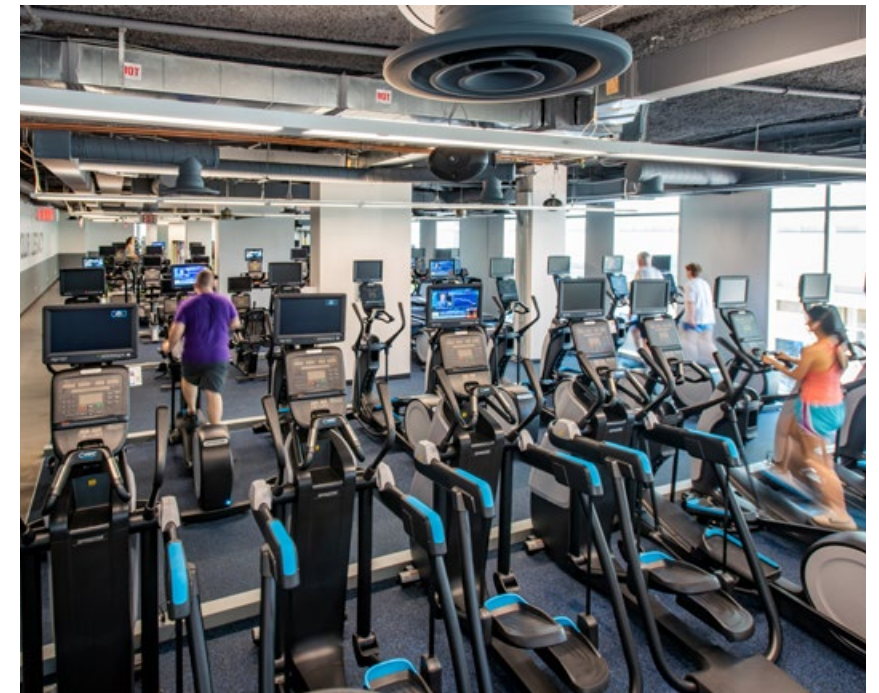
NEIGHBORHOOD



## WORK LIFE BALANCE

After you fuel up at one of Assembly's many options, the brand new Gold's Gym is there to welcome you and nourish your body with your choice of heart elevating group classes, private fitness or best in the industry machines. Whatever your preferred work out style, Gold's Gym has a space for you.

For additional work - life balance RCC also has a Chase Bank, Panera Bread, Barber Shop and One Stop Convenience store.







**3 METRO LINES**  
More than **13,000** weekly riders who visit Rosslyn's public transportation and the property.



**3 BUS SYSTEMS**



**3 MILES TO NATIONAL AIRPORT**



**5 MAJOR ROAD NETWORKS**



**EXTENSIVE NETWORK OF BIKE TRAILS**

## U N P A R A L L E L E D   A C C E S S

RCC is located above the Metro station offering commuters secure, climate controlled access to DC and Northern Virginia.





## STAY

- |                              |                              |
|------------------------------|------------------------------|
| 1. Courtyard by Marriott     | 5. Le Meridien               |
| 2. Red Lion Hotel Rosslyn    | 6. Residence Inn by Marriott |
| 3. Homewood Suites by Hilton | 7. Oakwood Arlington         |
| 4. Hyatt Centric Arlington   |                              |

## FITNESS

- |                     |                            |
|---------------------|----------------------------|
| 8. CrossFit Rosslyn | 11. Rosslyn Highlands Park |
| 9. Gold's Gym       | 12. Yoga Alliance          |
| 10. F45 Rosslyn     |                            |

## EAT

### 13. **The Assembly** at Rosslyn City Center

- |                   |                  |                    |
|-------------------|------------------|--------------------|
| - Sammy Pickles   | - gigi           | - Charo's Taqueria |
| - PNTRY           | - Fog Point      | - DMK              |
| - Greatlake Diner | - BIG DIY coffee | - beng beng        |

- |                             |                    |
|-----------------------------|--------------------|
| 14. Sushi Rock              | 20. Capriotti's    |
| 15. Tupelo Honey            | 21. Sfoglia        |
| 16. Chopt Creative Salad Co | 22. Sweet Green    |
| 17. Panera                  | 23. Compass Coffee |
| 18. CAVA                    | 24. Barely Mac     |
| 19. Continental Beer Garden | 25. District Taco  |

## TRANSPORTATION

- |                                  |                                   |
|----------------------------------|-----------------------------------|
| + Ronald Reagan National Airport | + Public Buses and Circulator     |
| + Lee Highway                    | + Theodore Roosevelt Bridge       |
| + Custis Memorial Pkwy           | + Key Bridge                      |
| + Georgetown Ferry               | + George Washington Memorial Pkwy |
| + Capital Bikeshare(s)           |                                   |





S  
O  
  
U  
L

## A T H R I V I N G C O M M U N I T Y

Rosslyn is a walkable urban community with a talented work force, cultural offerings, plenty of public space, chef-driven food and beverage offerings as well as residential options for all different types of people.



SEE MORE @ROSSLYNVA



BUILDING

AMENITIES

TRANSIT

NEIGHBORHOOD





# WELLNESS IS

## HEALTHY PEOPLE, HEALTHY BUILDINGS, STRONG PERFORMANCE

Better days begin in better spaces which is why our dedication to wellness remains our top priority. Our holistic approach encompasses health, security and connectivity to assure the safety and comfort for our customers as they return to the workplace with confidence and clarity.



AREP's hard work and recent investments have helped us achieve two of the most significant endorsements within our business – IWBI WELL and UL Industries. Not only is our entire portfolio WELL Health-Safety Rated, AREP is also the first commercial real estate company in the U.S. to achieve UL Industries Healthy Buildings Verification portfolio-wide. This commitment provides our tenants and their visitors spaces that promote their physical and mental well-being while encouraging and enhancing productivity.

# EASE YOUR MIND

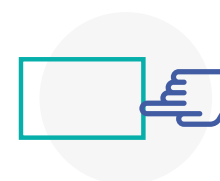


## HIGHEST STANDARDS OF INDOOR AIR QUALITY

Our IAQ protocols include using MERV 13 filters, electrostatic cleaning, and UV light and Negative Ion technology air purifiers in elevator cabs.



**INCREASED FREQUENCY OF CLEANING & DISINFECTING OF COMMON AREAS** particularly frequently touched surfaces like building entry door handles, restroom fixtures, water fountains, elevator call buttons, railings, and suite entry doors.



**ONGOING CLEANING & DISINFECTING WITHIN TENANT SUITES** including break room countertops and cabinet handles, microwave control pads and handles, refrigerator control pads and handles, copier control pads, conference room tables, and non-porous conference room seating.



**PROTECTING OUR TEAMS & OUR TENANTS** by following the CDC and local jurisdiction guidelines on personal protective equipment (PPE) use. Our property teams continue to keep tenants updated on their specific building policies.



BUILDING

AMENITIES

TRANSIT

NEIGHBORHOOD



# LEASING TEAM

**DAVID GOLDSTEIN**

703.485.8743

david.goldstein@am.jll.com

**BOB VESHANCEY**

703.485.8771

robert.veshancey@am.jll.com

**KRISTY KETTLES**

703.485.8748

kristy.kettles@am.jll.com

**BRENT MATHIS**

703.891.8398

brent.mathis@am.jll.com

**LEE ANN BRINKMAN**

703.891.8373

lee.brinkman@am.jll.com



ROSSLYN  
- CITY -  
CENTER

1700 N Moore St  
Arlington, VA 22209

ROSSLYNCITYCENTER.COM

Owned and managed by



American Real Estate Partners